

# Family Camp Procedures

## Meal and Canteen Procedures



In order to prevent the spread of Covid-19, all meals will be served carry out style.



We ask that one person be chosen from each family to retrieve all meals from the dining hall.



Each family will be given a specific time to pick up their food in order to increase food safety.



All families are encouraged to enjoy their meals throughout camp.

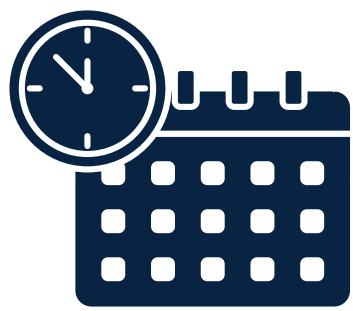


During Canteen, the host will take your order outside of Beta and deliver it to you.

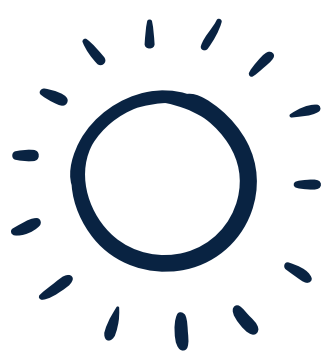


Please be sure to throw all garbage into one of the trash cans that can be found throughout camp.

## Activity Procedures



Your host will be in charge of scheduling your activities. All activities will be scheduled based off of availability and what time works best for your family.



You can set up as few or as many activities as you please.



Each activity will be set up for one family to use at a time.

## Bathroom Procedures

Please attempt to limit your bathroom usage to the one in your cabin.



When using a public restroom, we ask that you dispense your paper towels prior to washing your hands.



Please thoroughly wash your hands.



**Outposts:** Although our outposts do not have showers, there are some available! If you stay in Teepees, you will shower in the Women's bathroom in the Retreat Center. If you stay in Treehouses, you will shower in the Men's bathroom in the Retreat Center.

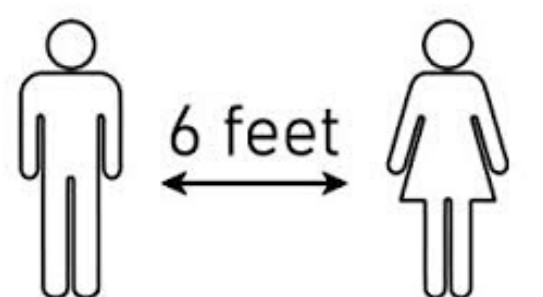


## Community Procedures

Although most activities are for individual families, there are some optional activities for large groups



During group activities, we ask that all families maintain the six foot social distance from other families.



Like every activity, group activities are optional! Please do whatever will make you most comfortable.

